

Product info 7.0 and 7.1: Tubular Filter Device

Tubular Filter Device for dust range < 2000 mg/m³

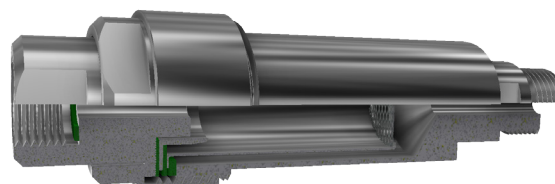
for manual dust measurement in flowing gases and gravimetric determination of dust load if the dust content is higher than 20 mg/m³: Separator with a filtering cartridge (cartridge stuffed with quartz wool or with glass- or quartz thimbles). The separator consists the filter housing Ø: 45 mm, length: 145 mm,

Entrance: Internal thread G ½

Exit: External thread G ½

Material Stainless Steel (up to 500°C): Art.-No.: 7.01-A

Material Titanium (up to 400°C): Art.-No.: 7.01-T



Picture: Filter device 7.01

Tubular Filter Device for dust range < 2000 mg/m³ with plane filter

for manual dust measurement in flowing gases and gravimetric determination of dust load if the dust content is higher than 20 mg/m³: A plane filter (Ø 45 mm) following the cartridge filter retains broken fibres from the cartridge which may occur during the measurement. By this the detection limit of the gravimetric mass determination is reduce and the reproducibility of the measurement is enhanced.

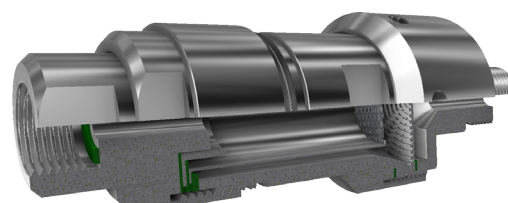
The separator consists the filter housing and the plane filter holder Ø: 55 mm, length: 145 mm,

Entrance: Internal thread G ½

Exit: External thread G ½

Material Stainless Steel (up to 500°C): Art.-No.: 7.11-A

Material Titanium (up to 400°C): Art.-No.: 7.11-T



Picture: filter device 7.11

For both filter devices matching metal filtering cartridge for stuffing with glass- or quartz fibre wool or thimbles, length: 68 mm

Filtering cartridge

Material Stainless Steel (up to 500°C): Art.-No.: 8.01

Material Titanium (up to 400°C): Art.-No.: 8.02

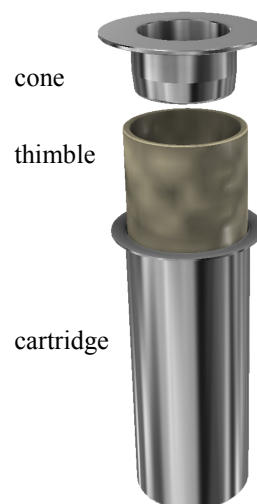
Matching Glass-fibre thimbles (Co. Munktell), Art.-No.: 603 GM
Ø: Outer: 26,8 mm, inner: 23,5 mm, length: 68 mm

Matching Quartz-fibre thimbles (Co. Munktell) Art.-No.: G-Ti
Ø: Outer: 26 mm, inner: 21,5 mm, length: 68 mm

Generally employ a cone when using glass- or quartz-thimbles. The cone guarantees that the gas flow moves into the thimble and not past it.

Cone Stainless Steel Art.-No.: 10.03

Cone Titanium Art.-No.: 10.02



Weighting- and Transport casing with screw cap

for cartridge with thimble: Art.-No.: 46.02

Suitcase for safe and contamination free transport,
for 8 transport glasses Art.-No.: 29.04-G8

