

# PAUL GOTHE BOCHUM

PAUL GOTHE GmbH  
 Manufacturer of Emissions Control Technology



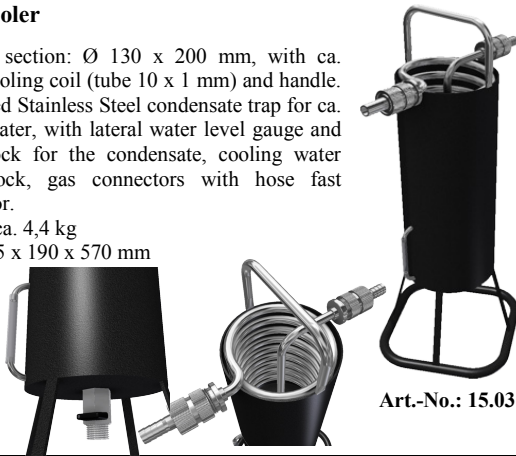
since 1924

## Product Info: Suction Line

### Gas Cooler

Cooling section: Ø 130 x 200 mm, with ca. 3,5 m cooling coil (tube 10 x 1 mm) and handle. Integrated Stainless Steel condensate trap for ca. 1 litre water, with lateral water level gauge and drain cock for the condensate, cooling water drain cock, gas connectors with hose fast connector.

Weight ca. 4,4 kg  
 Size: 195 x 190 x 570 mm



Art.-No.: 15.03

### Drying Tower

To dry the gas with Silica gel and to protect the gas meter against condensate. Made from stable grey and clear PVC. The complete cover can removed; makes easy access to the silica gel for replacement. Water separation chamber, Stainless Steel sieve, stable platform.

Clear-PVC, Ø 160 x 400 mm, with two threads in the cover.

With a little change, this drying tower can use as a condensate trap. With handle. Weight: ~ 6 kg,  
 Water separation chamber: Ø 150 x 65 mm (~1,2 l)  
 Drying section: Ø 150 x 300 mm  
 (~ 5,3 l / ~ 4,3 kg Silica gel  $\cong$  1060 g H<sub>2</sub>O)

Art.-No.: 16.011



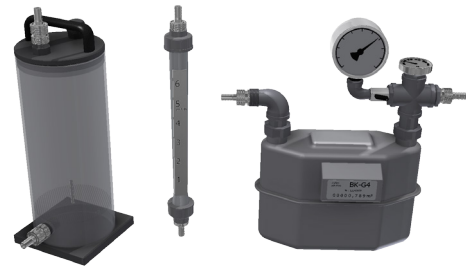
### Volumen Measurement – Complete Set



Consisting of bearer frame (stable construction with handle and holder from Stainless Steel tubes), big drying tower with condensate trap (Art.-No. 16.011), gas meter BK 4 (0-6m<sup>3</sup>/h) with vacuum gauge and thermometer, flow meter (0-6m<sup>3</sup>/h) and hose fast connector.

Size: 620 x 360 x 360 mm  
 Weight: 13 kg

Complete set Art.-No.: 22.0K-1



bearer frame with drying tower – flow meter – gas meter

### Gas-tight corrosion resistant dry running rotary vane vacuum pump

Particularly little maintenance requirements, resistant and highly efficient, 230 V, more than 600 mbar vacuum, can be installed in front of the gas meter because the pump is gas-tight (no wrong air < 0,1%) with flow control valve, can be reduced down to 200 l/h (since the mass of gas is led within the cycle and the pump performance is not slowed down, the pump is particularly durable), with vacuum manometer (-1 to 0 bar). On/off switch, hose fast connector

Special edition with corrosion resistant pump body.

**Performance: 6,4 m<sup>3</sup>/h (SC 8).**

0 mbar (3,75 m<sup>3</sup>/h at -400 mbar)

Weight ~ 11,9 kg, 220V, 1,6 A

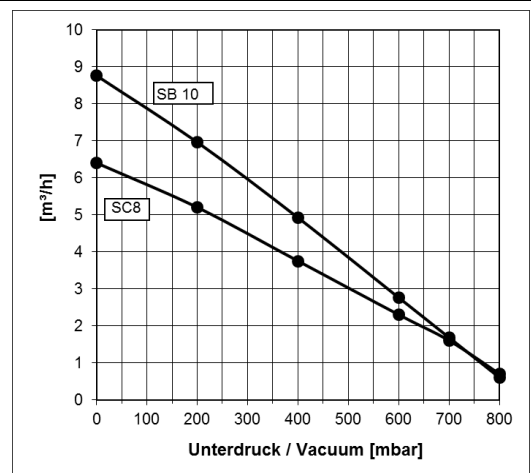
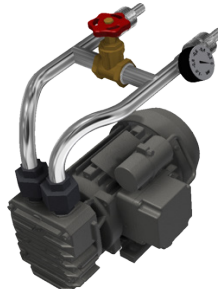
Art.-No.: 17.03-SC8

**Performance: 8,8 m<sup>3</sup>/h (SB 10).**

0 mbar (5,0 m<sup>3</sup>/h at -400 mbar)

Weight ~ 15 kg, 220V, 3,3A

Art.-No.: 17.04



### Small vane-pump type SC5

for pressure and vacuum in metal- and plastic housing with power switch, cable and pneumatic connection. Particularly little maintenance requirements, resistant and highly efficient, can be installed in front of the gas meter because the pump is gas-tight (no wrong air < 0.1%)



Vacuum max.:	800 mbar,
Suction volume (0 mbar):	4 m <sup>3</sup> /h,
Suction volume (-200 mbar):	3 m <sup>3</sup> /h,
Suction volume (-500 mbar):	1 m <sup>3</sup> /h,
Weight:	5,5 kg
Size:	230 x 136 x 125 mm
Power supply:	230 V / 1 A
Pneumatic:	hose olive Ø 6 to 10 mm

Art.-No.: 17.02-SC5