

## Product info: Pump

### Gas-tight corrosion resistant dry running rotary vane vacuum pump

Particularly little maintenance requirements, resistant and highly efficient, 230 V, more than 600 mbar vacuum, can be installed in front of the gas meter because the pump is gas-tight (no wrong air < 0,1%) with flow control valve, can be reduced down to 200 l/h (since the mass of gas is led within the cycle and the pump performance is not slowed down, the pump is particularly durable), with vacuum manometer (-1 to 0 bar). On/off switch, hose fast connector

#### Special edition with corrosion resistant pump body.

##### Performance: 6,4 m<sup>3</sup>/h (SC8).

0 mbar (3,75 m<sup>3</sup>/h at -400 mbar)

Weight ~ 11,9 kg, 220V, 1,6 A

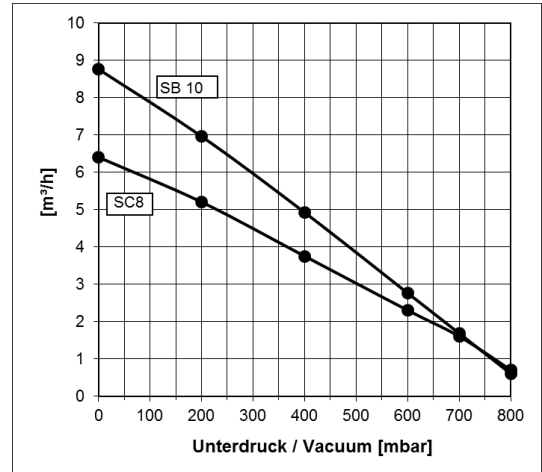
Art.-No.: 17.03-SC8

##### Performance: 8,8 m<sup>3</sup>/h (SB 10).

0 mbar (5,0 m<sup>3</sup>/h at -400 mbar)

Weight ~ 15 kg, 220V, 3,3A

Art.-No.: 17.04



### Small vane-pump type SC5

for pressure and vacuum in metal- and plastic housing with power switch, cable and pneumatic connection. Particularly little maintenance requirements, resistant and highly efficient, can be installed in front of the gas meter because the pump is gas-tight (no wrong air < 0.1%)



Vacuum max.:	800 mbar,
Suction volume (0 mbar):	4 m <sup>3</sup> /h,
Suction volume (-200 mbar):	3 m <sup>3</sup> /h,
Suction volume (-500 mbar):	1 m <sup>3</sup> /h,
Weight:	5,5 kg
Size:	230 x 136 x 125 mm
Power supply:	230 V / 1 A
Pneumatic:	hose olive Ø 6 to 10 mm

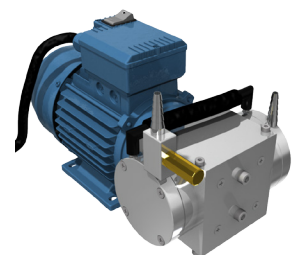
Art.-No.: 17.02-SC5

### Robust membrane-pump type P-722/W

for pressure and vacuum in metal- and plastic housing with switch on power cable and pneumatic connection. With integrated needle valve.

#### Technical data:

vacuum max:	950 mbar,
suction volume (0 mbar):	11 l/min,
suction volume (-200 mbar):	08 l/min,
suction volume (-500 mbar):	06 l/min,
membrane:	FKM;
weight:	4,6 kg
size:	265 x 100 x 155 mm
power supply:	230 V / 1 A
pneumatic connection for hose	Ø 6 auf 10 mm



Art.-No.: 26.021-MP