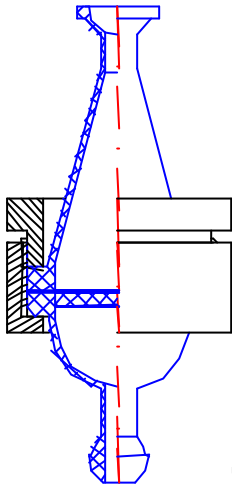


Product info 38.0: Glass Filter (VDI 2066 / EN 13284-1)

Dust filter in glass or quartz



Glass table filter housing: three-parts, made of duran or quartz for using a plane filter with \varnothing 50 mm.

Area of application: measurements of compounds such as HCl (material: duran) or HF (material: quartz), input section: at the front (entrance) pan KS 19, at the back plane flange (with external \varnothing 65), output section: at the front plane flange \varnothing 65 mm with glass frit \varnothing 40 mm, at the back (exit) ball KS 19.

The two glass devices are held together with a knurled stainless steel screw connection (two-pieces). The table filter is located on the frit. The glass sections are closed with a silicone seal between the flanges.

Screw connection out of stainless steel:
duran filter: Art.-No.: 38.044
quartz filter: Art.-No.: 38.043



Glass dust filter: two-piece, made of glass or quartz as dust collectors for gas analytics.

Front application with input pan KS 19 and core grinding NS 24/29, rear section, input: socket NS 24/29 and output: ball KS 19 for plugging with glass or quartz-fibres (internal \varnothing 24 x ~90 mm) with frit D0 (for dust concentrations of 5-1000 mg/m³),

material: duran Art.-No.: 38.012
material: quartz Art.-No.: 38.011

