

Product info 47.2: Holder for suction tubes with O-Ring

Combination of quick fast and gas tight holder

for fixing the suction tube at the measuring point. The holder needs at least the length of half a sleeve / socket (approx. 30 mm).

Quick fastener holder with O-ring

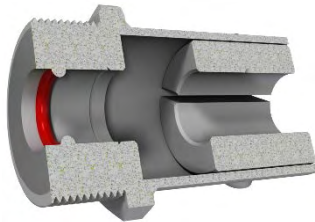
Holder to fix the suction tube at the measuring point. In the threaded part is mounted one O-ring seal made of fluororubber (FKM).

Material: Stainless Steel pipe with two Aluminium half-pans on the inside.



The lower half-pan is firmly screwed on while the upper pan is moved by a toggle. Shifting the suction tube works fast and easily through the toggle. The suction tube is not damaged by the half-pans even under strong loading. The half-pans are adapted to the required external \varnothing of the suction tube.

The O-ring makes the holder gas-tight.
For suction tubes with external \varnothing : 25 or 60 mm.



Small holder (for suction tubes with \varnothing : 25 mm)

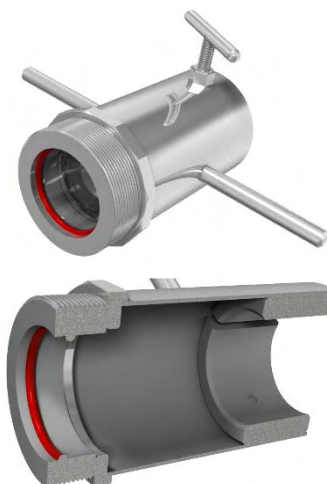
with external thread G 2

Art.-No.: 47.23-25-2

with external thread G 3

Art.-No.: 47.23-25-3

Length: ca. 150 mm

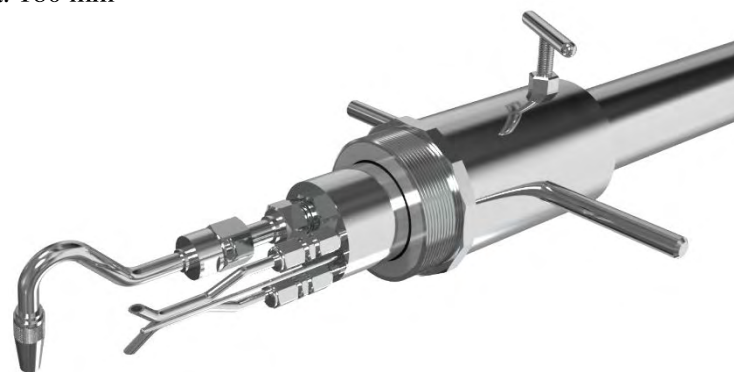


Big holder (for suction tubes with \varnothing : 60 mm)

with external thread G 3

Art.-No.: 47.23-60-3

Length: ca. 180 mm



Sleeve reduction



The holder can be adapted to the different coupling sleeves / sockets at the measuring points through sleeve reductions (bushing (M/F)). The sleeve reduction is composed of stainless steel and an internal thread.

Reduction of G 3 to G 2:

Art.-No.: 47.41

Reduction of G 2½ to G 2:

Art.-No.: 47.42